



# REFERENCE PROJECTS



Amorim Revestimentos, the worldwide market leader of cork flooring, places nature on the starting point for a better future, investigating and creating flooring solutions that, without affecting the environment, ensure a higher quality of life.

Being present in more than 51 countries, Amorim Revestimentos' International flooring portfolio and brands, are known throughout the world as pioneers in creating top-quality, ground-breaking solutions.

Wicanders, Amorim Revestimentos' premium brand, has been producing flooring since 1868, always inspired on nature's most pure values and using avant-garde technologies to provide high quality, ecologic and stylish flooring.

Wicanders has an unsurpassed reputation for providing high standard and unique comfortable flooring solutions, following the latest decoration tendencies and targeting both residential and commercial market segments.



# MORE THAN JUST A BEAUTIFUL FLOOR

Over the years, Wicanders has developed floor and wall coverings with exclusive properties due to its innovative Corktech technology.

By using a unique engineered multilayer structure, which combines state of the art technology with the exclusive natural properties of cork, a higher standard in flooring was achieved, providing the perfect match between beauty, comfort and durability.

Wicanders floors are available with different decorative materials protected by the upmost resistant finishings.

The uniqueness of Wicanders was achieved by using a prime quality core layer of cork, which provides superior comfort, noise reduction and warmth. An integrated cork underlay reinforces thermal and acoustic properties, resulting in a silent environment and important energy cost savings.



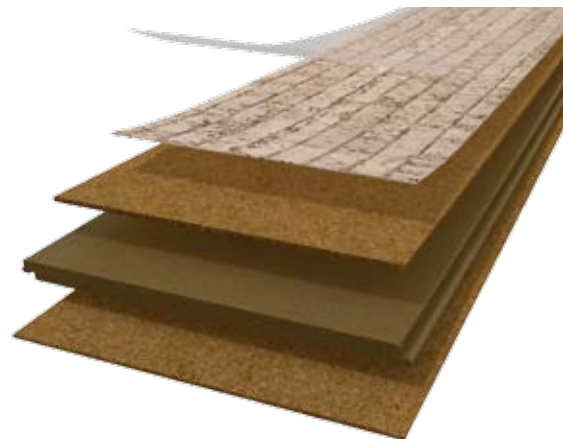
Protective wear layer

Decorative material

Agglomerated cork  
Step sound reduction,  
warmth & comfort

High density fiberboard

Insulating cork underlay  
Impact sound reduction  
& thermal reinforcement



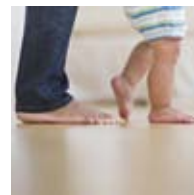
**MORE  
SILENCE**



**MORE  
BODY  
WELLNESS**



**MORE  
WARMTH**



**MORE  
WALKING  
COMFORT**



**MORE  
IMPACT  
RESISTANCE**



# REFERENCE PROJECTS

From homes to hotels, restaurants to libraries, museums to hospitals, Wicanders coverings can be found all over the world. The unique features of cork make Wicanders acknowledged worldwide by architects, designers and engineers.

The benefits of Wicanders cork floors can perfectly match the specificity of the projects that they're chosen for. This book presents a selection of reference projects where Wicanders proves its value and singularity.

MORE  
**7 SILENCE**  
Relaxed spaces

MORE  
**23 BODY WELLNESS**  
Healthy spaces

MORE  
**39 WARMTH**  
Cosy spaces

MORE  
**53 WALKING COMFORT**  
Comfortable spaces

MORE  
**65 IMPACT RESISTANCE**  
Busy spaces



# MORE SILENCE

Cork is an extremely efficient natural sound absorber because its cells work as an acoustic insulator.

Incorporated in a floor covering, cork enables the reduction of walking sound within a room, and acts as a noise buffer between rooms. Added to the overall benefits provided by Wicanders cork floors, this helps to create a more peaceful environment.

For that reason, Wicanders products are chosen to feature in projects that need acoustic insulation. In spaces like libraries or museums, cork floors enhance the ambiance by making it quieter and also more comfortable.





# GOTOH MUSEUM

TOKYO JAPAN

Corkcomfort Slate Eclipse



Gotoh is a private museum in the district of Setagaya, which showcases Keita Gotoh's private collection of classic Japanese and Chinese art. However small, it requires a peaceful ambiance where visitors can appreciate the exhibitions.

The Corkcomfort floor contributes to this calmness, while also matching the sober minimalist aesthetic of the building.







## LOPE DE VEGA PUBLIC LIBRARY

MADRID **SPAIN**

Corkcomfort Identity Moonlight

With 3000 m<sup>2</sup>, this library in Madrid welcomes a large number of visitors.

The cork floor endures the high traffic of users and also reduces the transmission of sound inside and between rooms, granting the silence and peacefulness required in a library.







# ERVIN SZABÓ LIBRARY

BUDAPEST HUNGARY

Corkcomfort Originals Accent

Woodcomfort Classic Maple

The Metropolitan Ervin Szabó Library is the largest network library in Budapest and its central building, housed in a 19th century historic Palace, has been awarded with the Prix d'Excellence.

In this large building, two Wicanders products help improve the ambiance by assuring that the movement of users is as silent as possible.







# THE GREENHOUSE, THE CELLARS HOHENORT

CAPE TOWN **SOUTH AFRICA**

Corkcomfort Identity Moonlight

The Greenhouse is a restaurant in the hotel Cellars-Hohenort, located in a historical Constantia Valley vineyard. With a breathtaking panoramic view of the mountains and beautifully arranged gardens, it calls for a peaceful environment where guests may enjoy the food as well as the surroundings. A cork floor is a smart choice, since it makes the dining and lounging areas feel less crowded due to the reduction of sound.







# LEONARDO DA VINCI MUSEUM

MILAN **ITALY**

Woodcomfort Classic Sucupira

Museo della Scienza e della Tecnologia "Leonardo da Vinci" is the largest science and technology museum in Italy. Established in an ancient monastery, it is divided in seven departments and welcomes an average of 400.000 visitors per year. The Woodcomfort floor has a distinct noble beauty to match the monastery's architecture, also making sure that the passage of visitors does not echo across the exhibition halls.





# HARTFORD PUBLIC LIBRARY

CONNECTICUT **USA**

Corkcomfort **Originals Accent**

Hartford Public Library is visited by a large group of local citizens. The cork floor contributes to create a quiet environment and it is also resistant to withstand a high traffic of visitors without suffering damages.





© Fujitaka Mitsuoka



# NEZU MUSEUM

TOKYO JAPAN

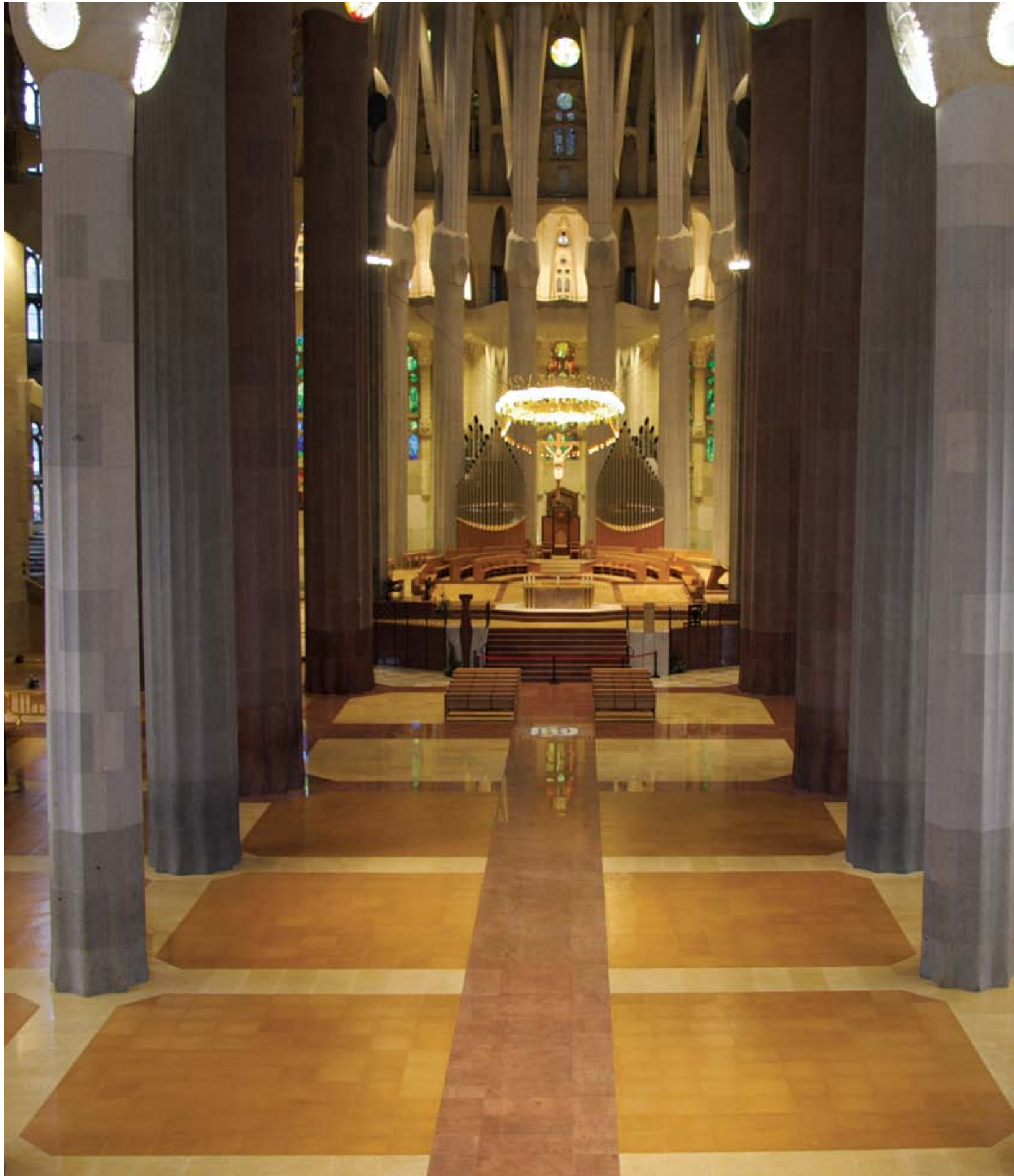
Corkcomfort Personality Nightshade

The Nezu Museum is famous for harbouring antique Japanese national treasures, such as paintings and sculptures, that belong to Nezu Kaichiro's collection.

Renewed in 2006, the awarded Japanese architect Kuma Kengo was responsible for the architecture and interior design of the new building.

The combination of the distinct look with the acoustic properties of the Corkcomfort floor were determinant for Kuma Kengo when choosing a floor.







# LA SAGRADA FAMILIA

## BARCELONA SPAIN

**Corkcomfort Originals Natural**

La Sagrada Familia is a distinguished basilica in Barcelona, designed by Spain's most known architect, Antoni Gaudí. It has been in construction since 1882, and is a UNESCO World Heritage Site.

The amount of visitors it welcomes everyday requires that the walking sound is reduced to a minimum so that ongoing festivities are not disturbed. The Corkcomfort floor grants the reduction of noise and its durable composition can resist the recurring high traffic of people.







# MORE BODY WELLNESS

Walking on overly hard floors creates an excess of tension that, with time, makes feet, legs and back hurt. Too soft floors can cause fatigue and aren't easy to walk on.

Cork flooring is between too hard and too soft floors having the needed stability to reduce the effort to walk. Wicanders cork floors are easy on the body, being the perfect mix to reduce heel strike impacts and related body tensions.

For projects in the health & care sector, Wicanders products have the added benefit of improving walking, therefore increasing the overall well-being.







## SEOUL NATIONAL UNIVERSITY HOSPITAL

SEOUL KOREA

Vinylcomfort **Provence Oak**

Corkcomfort **Flock Brunette**

Corkcomfort **President Chestnut**

Corkcomfort **Identity Secrets**

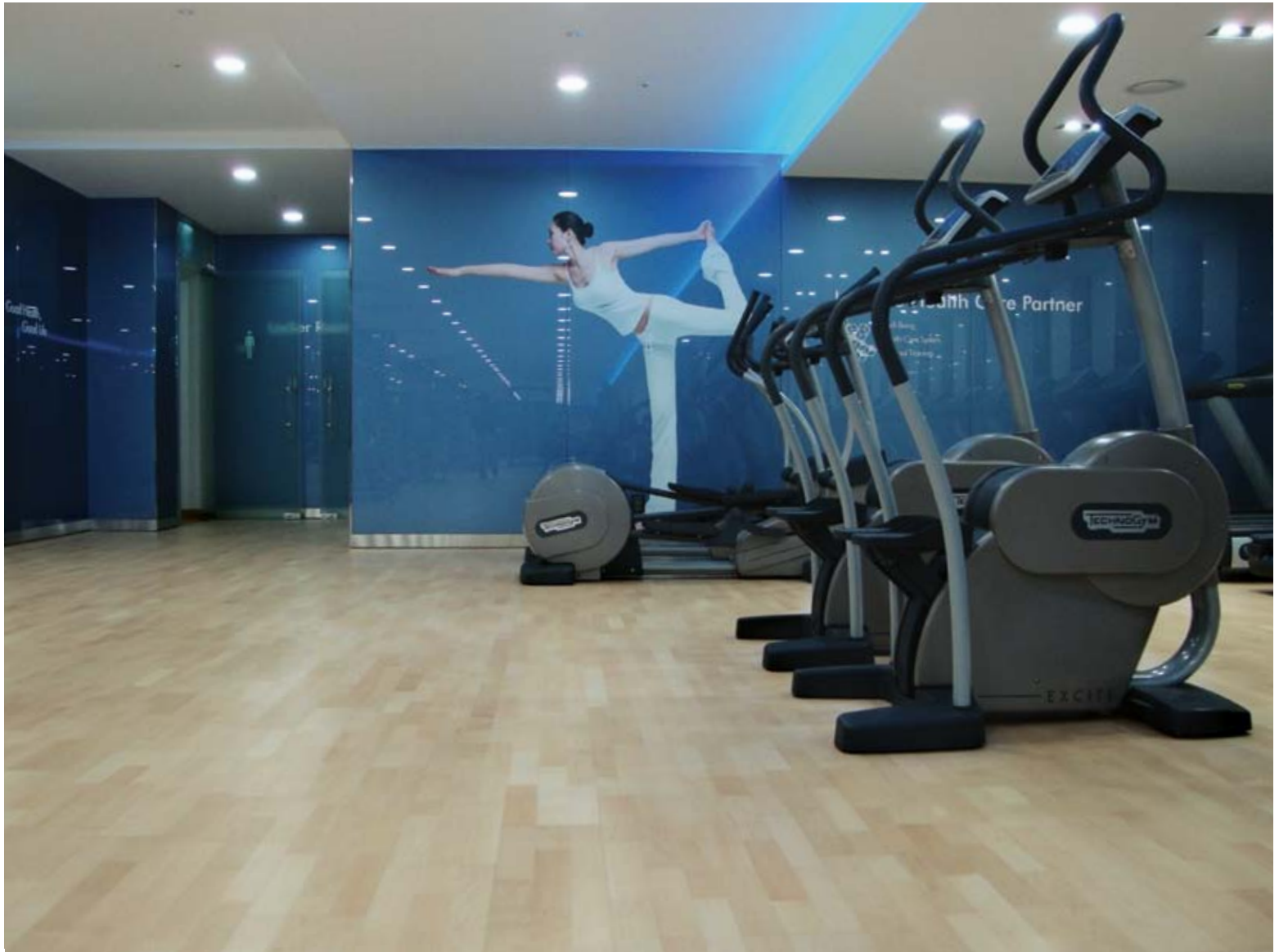
Vinylcomfort **American Walnut**

Vinylcomfort **Bianco Travertine**

This hospital is part of Seoul University's School of Medicine, and performs general and specialized medicine services, being as well a teaching hospital. It's one of the oldest and biggest in South Korea. Wicanders products were chosen for this high traffic space, where the cork core makes walking across the buildings a less tiring task for patients, employees and students.







## DOOSAN GROUP'S HEALTH CLUB

SEOUL **KOREA**

Woodcomfort Classic Maple

The Doosan Group is one of South Korea's biggest and oldest companies, and has been featured in Forbes magazine and in the Fortune Global 500 list. As a conglomerate company that values health in the work place, Doosan chose a cork floor for one of their health clubs, where it helps relieve tension on people's bodies and makes physical activity easier to perform.





# ETHIANUM KLINIK

HEIDELBERG GERMANY

Woodcomfort Classic Walnut

The Ethianum is a German state of the art clinic specialized in cutting-edge medical services, complemented with a first class treatment. All the rooms were planned having the patient's well-being in mind, to which the Wicanders floor contributes by increasing the comfort while walking.

The product's environment-friendly composition was also important when choosing the material for the floor, since the Ethianum Klinik claims to be one of the most sustainable clinics in Europe.











## CROWNE PLAZA HOTEL

ISTANBUL **TURKEY**

Corkcomfort **Pebbles Autumn**

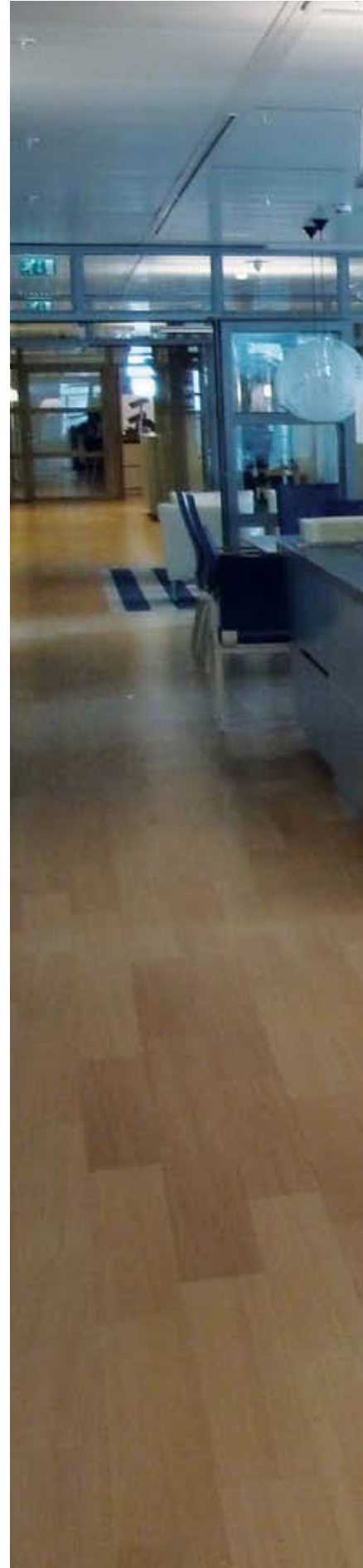
Woodcomfort **Classic Cherry**

Woodcomfort **Classic Walnut**

Crowne Plaza is a distinguished brand with hotels all over the world and one of its main concerns is that guests feel comfortable at their facilities.

Cork flooring is between too hard and too soft floors, and its stability is beneficial when installed on a gym.





# ORBIS MEDICAL CENTER

SITTARD **NETHERLANDS**

Woodcomfort Classic Red Oak

This general hospital in Sittard stands out for its modern and highly technological facilities. With day care, mental health and rehabilitation departments, the rooms are individual so that patients can stay for a long period of time and feel comfortable. The Wicanders product matches the hospital's simple yet modern design while increasing the walking comfort across its many areas.











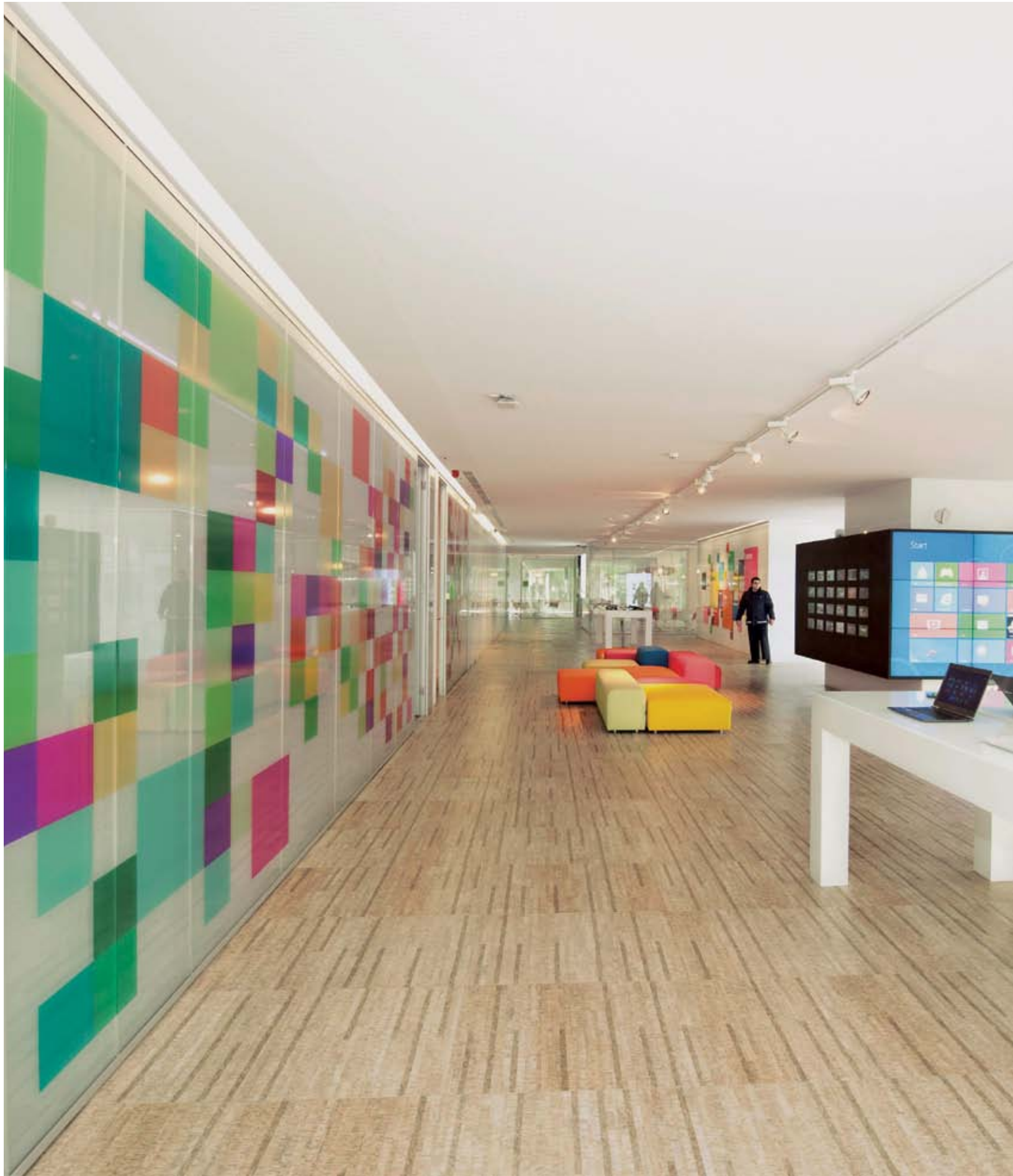
# BENEFICIÊNCIA PORTUGUESA HOSPITAL

SÃO PAULO **BRAZIL**

Woodcomfort Classic White Oak

Beneficência Portuguesa is the biggest hospital complex in South America. Its aim is to keep progressing in order to better meet its patients' needs. An important feature when choosing a Wicanders floor was the capacity to reduce the walking effort, therefore contributing to the patients' health and well-being.







# MICROSOFT OFFICES

LISBON PORTUGAL

Corkcomfort Linn Blush

As one of the world's most successful companies, Microsoft optimises working spaces in order to increase productivity. The floor chosen for the offices in Portugal makes walking across the building less physically demanding.





# MORE WARMTH

The natural thermal insulation properties of cork make Wicanders floors very energy efficient, helping to stabilize the temperature within a room. Be it a cold or warm environment, cork floors can avoid energy dispersion and keep an optimal room temperature all year round.

Wicanders floors boost the sense of cosiness in any space, while saving costs in energy. This feature, combined with the overall characteristics of cork, makes Wicanders a highly suitable choice for hotels or homes, where it creates an enjoyable ambiance.







## PRIVATE BEACH LOFT

SÃO PAULO **BRAZIL**

Woodcomfort Classic White Oak

Wicanders floors are a fulfilling choice for private homes, because they match the beauty of great decors with the benefits provided by cork, keeping an optimal temperature without recurring to electrical heating and cooling devices.





# O'SULLOC TEA HOUSE

SEOUL **KOREA**

Corkcomfort Identity Nightshade

The O'Sulloc tea house is a themed café franchise, and its purpose isn't just the tasting of tea, as it aims to give its customers a relaxed experience through a soothing space. The use of a cork floor improves the space's warmth and creates a pleasant atmosphere.









# PRIVATE HOME

PRAGUE **CZECH REPUBLIC**

Vinylcomfort **Wheat Pine**

In countries with a long and cold winter, a Wicanders floor solution is valuable, since the cork core plays an important role in isolating spaces from the exterior, helping to achieve an optimal temperature and a cosy ambiance all year round.



# PRIVATE APARTMENT

SEOUL KOREA

Corkcomfort Originals Accent

In this apartment, the flooring product was installed on a wall. Although it is mostly an aesthetical option, the benefits of cork remain the same. The insulation features decrease the dissipation of temperature, helping to keep this large room warm without the need for a heating system.



# THE LINC AZORES

AZORES **PORTUGAL**

Woodcomfort Classic Beech

Located in a Portuguese island, this hotel welcomes a great number of tourists and its goal is to provide the best service to them. In a location where the level of moisture is high, the Wicanders floor helps to keep the bedrooms dry and at the right temperature to make visitors feel as comfortable as if they were at home.









# PINE RIDGE GOLF CLUB

GWANG-DO **SOUTH KOREA**

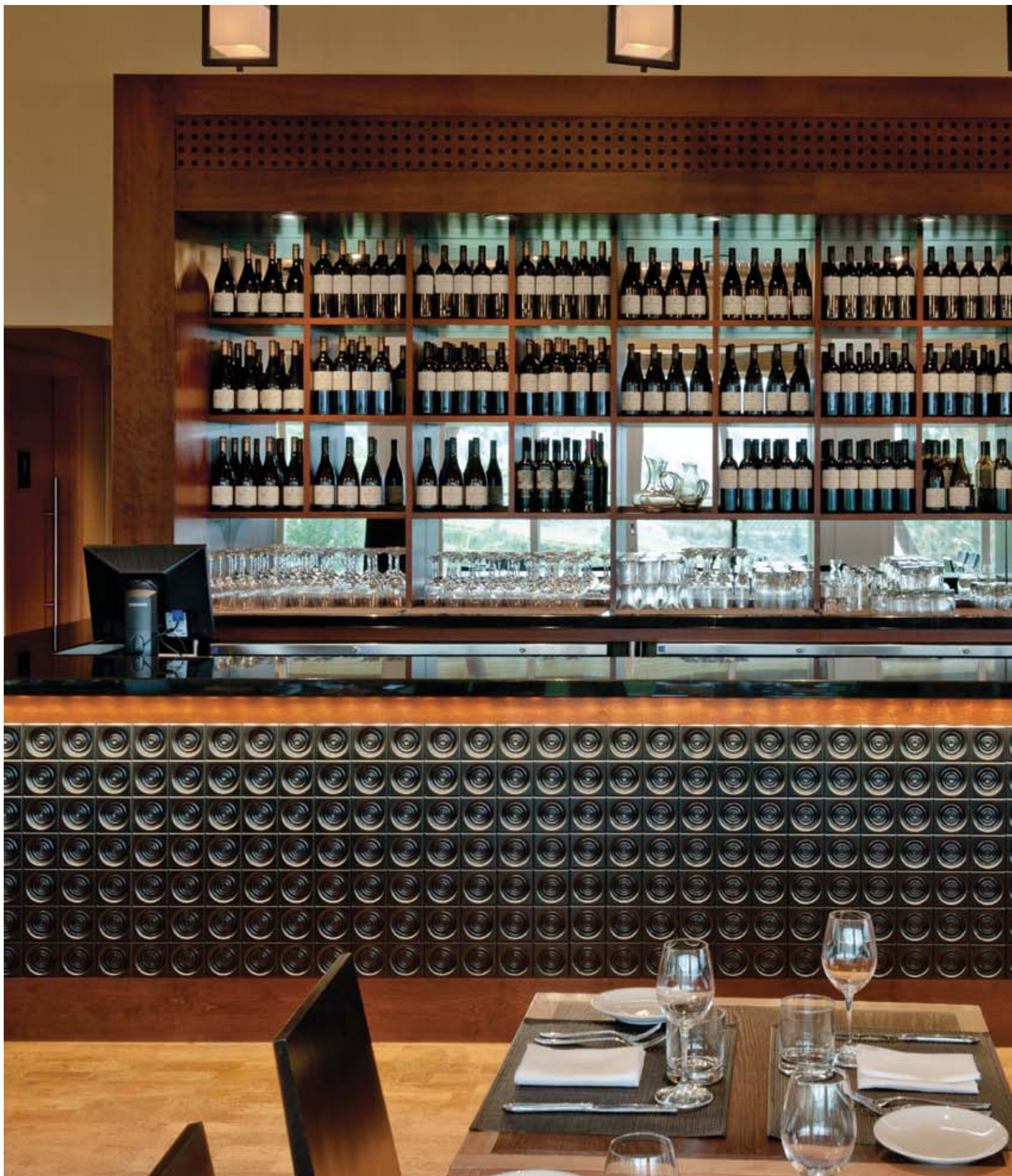
Woodcomfort Classic Mahogany Dark

Corkcomfort Identity Moonlight

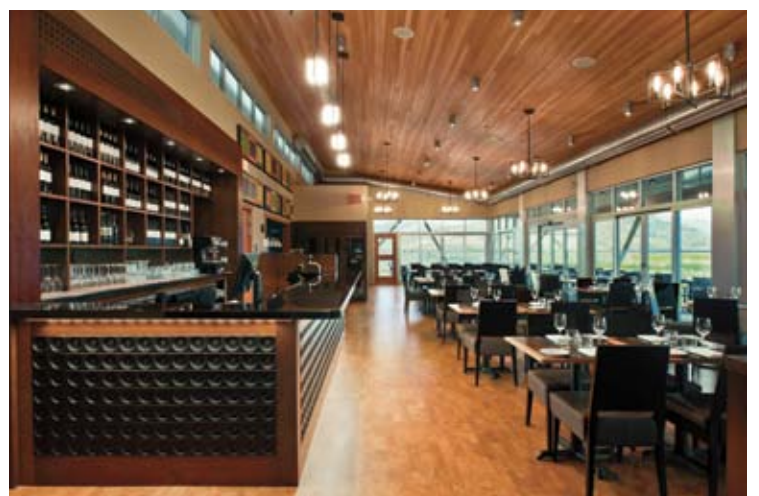
This luxurious golf and spa club offers comfort and relaxation to its clients and is also environment-friendly. Wicanders meets these values, since it grants warmth and cosiness while always keeping sustainability in mind.











## MIRADORO RESTAURANT

OKANAGAN, BC **CANADA**

Corkcomfort Identity Caramel

Miradoro Restaurant is a partnership between the Tinhorn Creek vineyards and chef Manuel Ferreira. It's a rustic and elegant place where the warm and enjoyable atmosphere is enhanced by the Wicanders cork floor. The chosen flooring complements the chef's Portuguese roots, which are also present in his dishes.





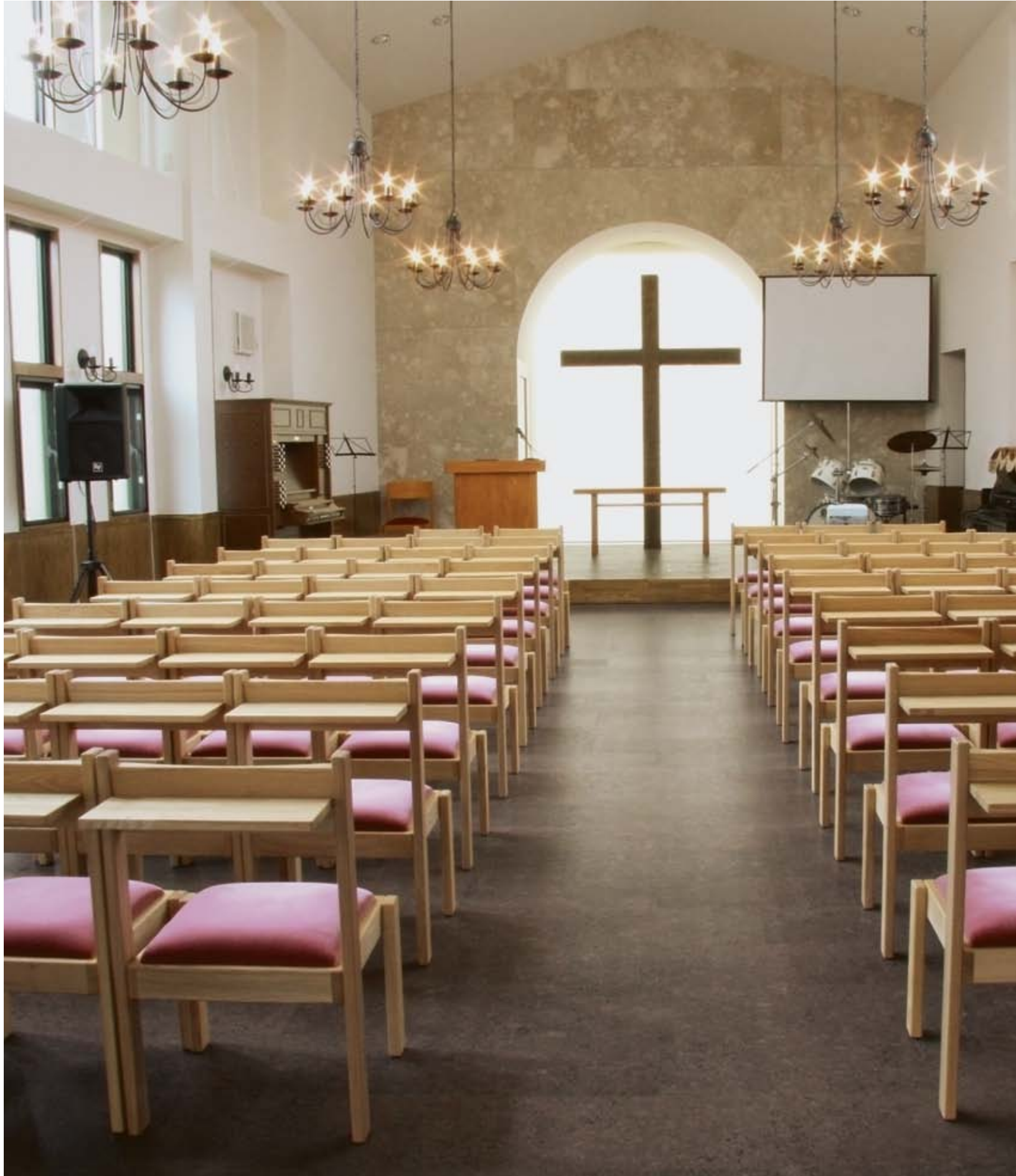
# MORE WALKING COMFORT

Cork has an inherent flexibility that when applied on flooring makes walking a comfortable movement.

Wicanders cork floors have the best performance when it comes to comfort perception, outperforming linoleum, laminate and ceramic floors. Even when walking barefoot on a Wicanders floor, a sense of cosiness, relaxation and enjoyment is felt, adding to the overall well-being.

In places where comfort must be combined with resistance, such as hotels, Wicanders products achieve great results resisting the high traffic of guests and also creating a pleasant environment.





# KOBE GOSPEL CHURCH

KOBE JAPAN

Corkcomfort Nuances Castagna

This church maintains one of Japan's most distinctive habits: visitors do not use shoes inside the building. The use of a cork floor makes it more pleasant to touch and easy to walk on.









## SHIRAKAWA LIBRARY

SHIRAKAWA JAPAN

Corkcomfort Linn Blush

Shirakawa is a small town in Japan and its public library is a modern, functional building inspired by the surrounding landscape. In some areas of the library, it is required to be barefoot, so the floor must be pleasant to walk on. The Corkcomfort floor used meets this requirement, with a warm and enjoyable touch, that also complements the building's peaceful atmosphere.





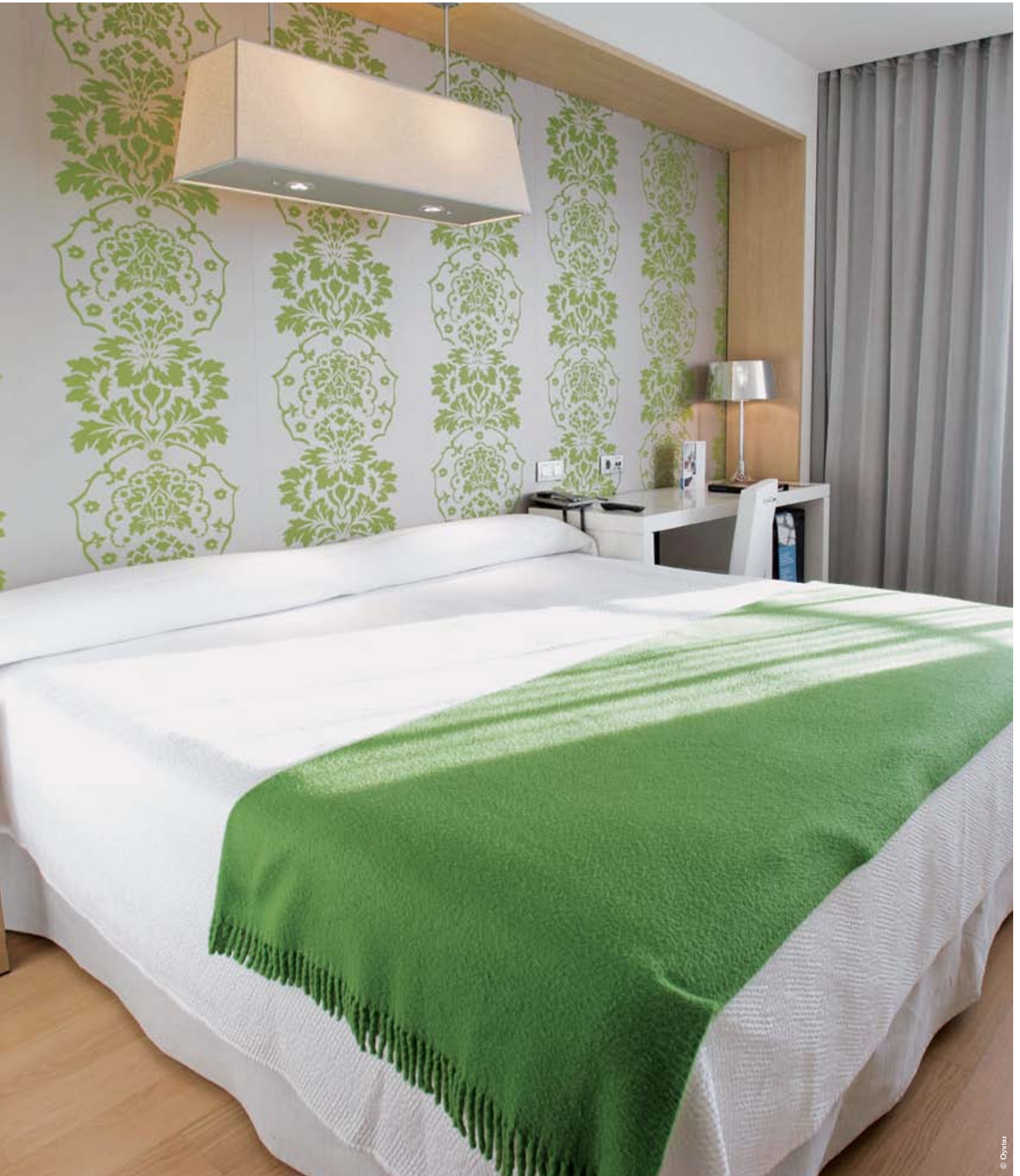


# NH PRINCIPE DE VERGARA

MADRID **SPAIN**

Woodcomfort Classic White Oak

NH Hoteles is a widely known chain in Europe. This hotel room in the NH Principe de Vergara was the model room, where Wicanders floors were installed to enhance the comfort and well-being. The experience resulted in the choice of Wicanders floors for more NH hotels, such as Rome, Milan, Florence, and Pamplona.







# HYUNDAI MOTOR GROUP HOTEL

YONGIN **KOREA**

Woodcomfort **Classic White Oak**

Woodcomfort **Oak Rustic**

Hyundai Motor Group is the largest automobile manufacturer in South Korea and is widely known around the world, with other businesses such as lodging. In the rooms and adjacent hallways, guests must take their shoes off. The warm and soft touch of a Wicanders floor is ideal for this requirement, especially when combined with the floor's easy maintenance and high durability, which are essential features in executive hotels like this one.









## BOSCOLO B4 HOTEL

MILAN **ITALY**

Woodcomfort Ash Brandy

The Boscolo hotel chain provides 4 to 5 star accommodations in Europe. With the B4 Hotel in Milan, the aim was to create a futuristic space that connected impressive architecture with the guest's senses. The Wicanders floor improves the visitor's experience by making it enjoyable and cosy, because of the walking comfort and optimal room temperature provided by cork flooring.





# MORE IMPACT RESISTANCE

Cork's elasticity and compressibility allow it to adapt to pressure. When compressed, it doesn't lose flexibility, recovering its initial shape and volume without suffering damages.

Wicanders cork floors have a high shock absorbing performance maintaining its resistance to everyday wear and abrasion at the same time. This results in a very robust flooring with a long life span.

In public places with moderate to high traffic, like coffee shops or even auditoriums, Wicanders cork floors show their value by keeping both their function and beauty for a long time, without the need for hard maintenance.









## DÜNYASI CAFÉ

ISTANBUL **TURKEY**

**Vinylcomfort** Claw Brass Oak

Dünyası café is located in the Sabiha Gökçen Airport, the second biggest international airport in Istanbul.

In order to endure the high flow of passengers, the floor must have a high resistance combined with easy maintenance. This Vinylcomfort product fits these demands by matching cork's durability with the highly resistant wear layer of the vinyl surface.



# ANTHILL RESIDENCE TOWERS

ISTANBUL **TURKEY**

Parquet Classics Oak Nature

The Anthill Towers are one of the highest buildings in Istanbul, comprised of luxury apartments. Wicanders floors were used in the private residences and also in the social club and lounge area, places where the pavement must keep its distinctive appearance undamaged in order to live up to the project's values.



# KENNETH COLE SHOP

ISTANBUL **TURKEY**

Woodcomfort Oak Coal

Kenneth Cole is a renowned fashion designer, with shops all over the world. This particular shop is located in a shopping mall with high traffic.

Wicanders cork floors have high wear resistance and are easy to clean, enabling the floor to maintain its beauty for many years.











## TEIN TEA HOUSE

ISTANBUL **TURKEY**

Vinylcomfort Chalk Oak

The high popularity of tea rooms in Turkey require these spaces to meet the demands of a recurring flow of customers. Wicanders products are an ideal choice to easily face daily wear without needing elaborate maintenance.









## CERVECERIA AÍZKORRI

ASTORGA **SPAIN**

Vinylcomfort Rustic Limed Grey Oak

In this brewery located in the center of Astorga, the Vinylcomfort floor matches the design of the space, and it also grants resistance to daily wear.





# U KARLOVA MOSTU RESTAURANT

PRAGUE **CZECH REPUBLIC**

Vinylcomfort **Limed Forest Oak**

Located near the famous Charles Bridge in Prague, this restaurant proves that Wicanders floors are a great fit for commercial spaces, thanks to the product's high resistance and flexibility.







# SIMONDS STADIUM

GEELONG, VIC **AUSTRALIA**

Corkcomfort Identity Moonlight

Simonds Stadium is the home stadium for Australian football team The Geelong Cats. Installed in the stadium's museum and social area, the Wicanders floor is a subtle design choice that withstands the traffic of visitors, maintaining its beauty for a long time in spite of crowds.









## PORTUGUESE PAVILLION, EXPO SHANGHAI 2010

SHANGHAI **CHINA**

Corkcomfort Slate Caffè

Corkcomfort Scoria Burgundy

Corkcomfort Slate Eclipse

Woodcomfort Victorian

For Expo Shanghai 2010, Carlos Couto, the architect who designed the Portuguese pavillion, used the country's most typical materials, being one of them cork.

With a modern design, its exterior walls and interior flooring incorporated cork, to show its beauty and demonstrate the product's resistance.





# SANDA CONCERT HALL

KANSAI JAPAN

Corkcomfort Traditional Terra

Concert halls are very popular spaces in Japan where people gather to listen to classical music. Being grandiosity a common feature in these spaces, the floor needs to be resistant to the high traffic of visitors.

The Wicanders cork floor keeps its beauty and function for many years without suffering damages, and has the added benefit of reducing the echo of walking sound across the room.







| scan with your smartphone |







DE Amorim Deutschland GmbH (+49) 4221 5 93-01 .....germany.ar.de@amorim.com  
 NL/BE/LU Amorim Benelux B.V. (+31) 166 604 111 .....info.ar.nl@amorim.com  
 AT Amorim Deutschland GmbH (+43) 1 54 51 65 10 .....austria.ar.de@amorim.com  
 CH Amorim Flooring Switzerland AG (+41) 41 726 20 20 .....info@amorim.ch  
 PT Amorim Revestimentos, S.A. (+351) 227 475 600 .....geral.ar@amorim.com  
 ES Amorim Revestimientos, S.A. (+34) 902 307 407 .....info.ar.es@amorim.com

FR Amorim Revestimentos, S.A. (+33) 800 914 848 .....info.ar.fr@amorim.com  
 CN Amorim Revestimentos, S.A. (+85) 366 625 06 .....info.ar.cn@amorim.com  
 JP Amorim Japan Corporation (+81) 035 575 69 09 .....amorimjapan.ar@amorim.com  
 DK Timberman Denmark A/S (+45) 995 252 52 .....timberman@timberman.dk  
 PL Dom Korkowy, Sp. z o.o. (+48) 126 379 639 .....krakow@domkorkowy.pl  
 US Amorim Flooring North America (+1) 410 553 60 62 .....info.ar.us@amorim.com  
 RU Amorim Revestimentos, S.A. (+7) 495 280 7860 .....info.ar.ru@amorim.com



**HeadQuarters**  
 Amorim Revestimentos S.A.  
 (+351) 227 475 600  
 geral.ar@amorim.com

